



CEITEC

Central European Institute of Technology

BRNO | CZECH REPUBLIC

# Scientific Career as an Individual Path and Business Case

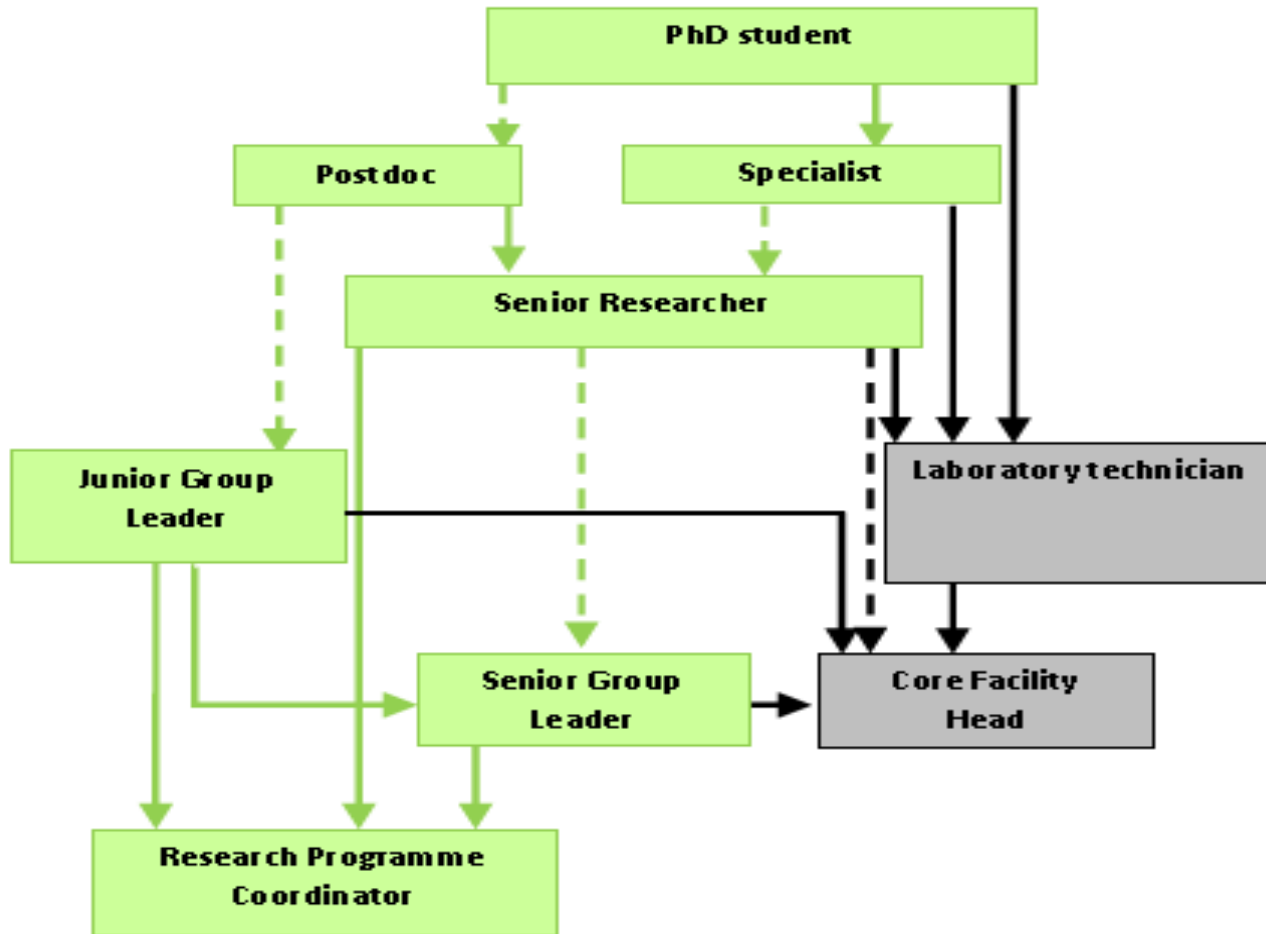
**Jiří Nantl**

Director, CEITEC, Masaryk University

KREcon, Prague, 6/10/2016



# Scientific career (example of CEITEC)



# How to reach the top?

- Very selective path
  - Most PhD students (life sciences/worldwide) don't enter the postdoctoral level
  - Most postdocs don't make it into the GL level
- International/diverse experience essential
  - Several years of postdoctoral experience abroad required
- Intellectual independence
  - Stop publishing with your supervisor
- The business case!
  - A research theme of your own, and convincing other about its relevance and importance

# Being a Group Leader

- Top research position (Group Leader/Principal Investigator/Research Director)
- A most complex job
  - Intellectual leadership and active research
  - Strategy-setting, financial planning and grantsmanship
  - HR management
  - Participation in institutional governance/negotiation partner to the management
  - An entrepreneurial role!

# Next career option(s)

- Horizontal mobility (moving to other institution)
- Core Facility
- Professorship at a university
- Managerial role/directorship
- Industry/business

# What if you don't want to go to the top

- That has been a bit a problem („*up or out*“)
- ...but new career opportunities emerging also within the academic research sector (Core Facilities)
- Skills acquired while working as junior researcher relevant also outside academia!
- Institutions should give more attention to junior researchers training from this perspective

# THANK YOU!



[jiri.nantl@ceitec.muni.cz](mailto:jiri.nantl@ceitec.muni.cz)

